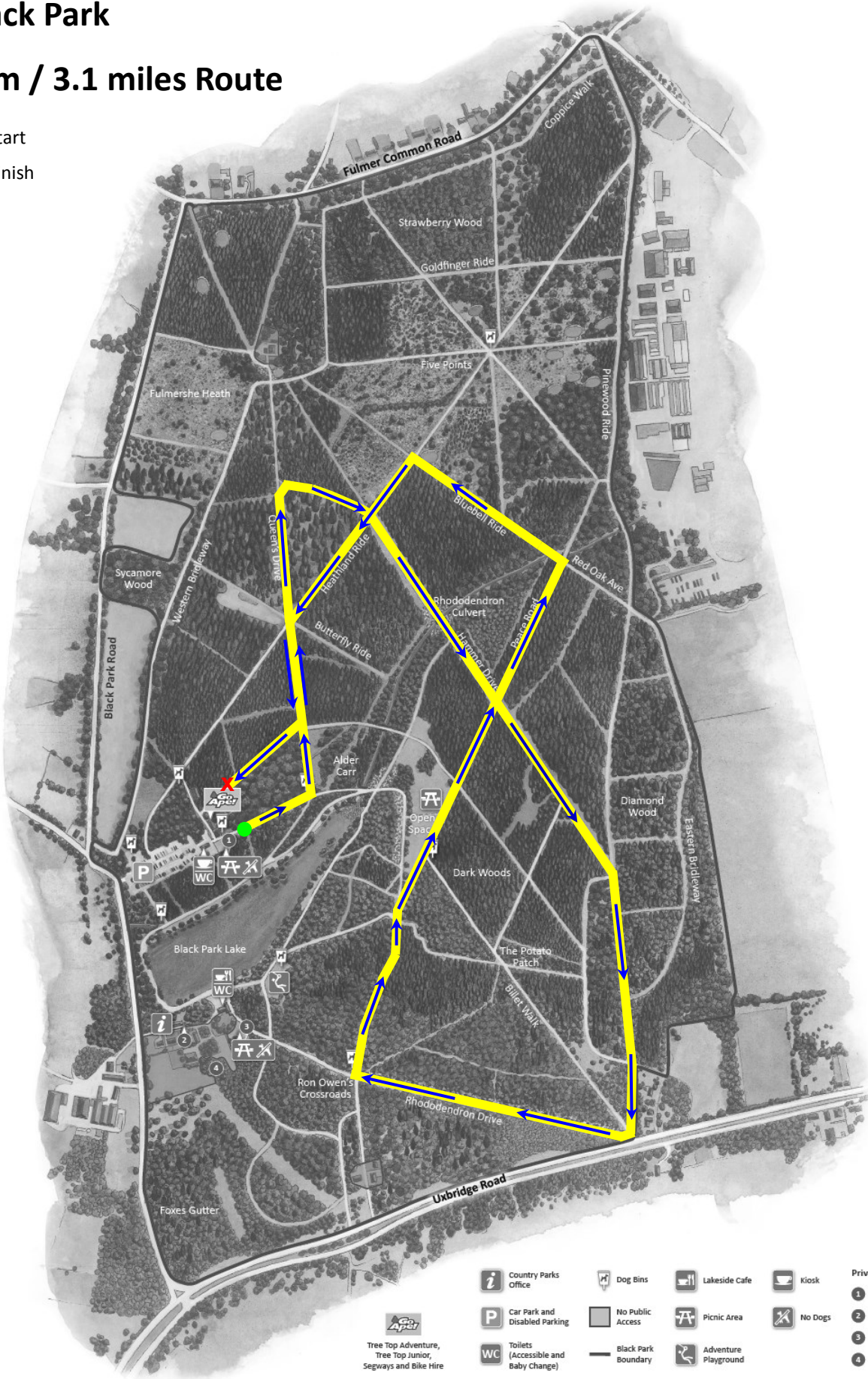


# Black Park

## 5km / 3.1 miles Route

- Start
- ✗ Finish



- |  |                                      |                     |                      |                            |
|--|--------------------------------------|---------------------|----------------------|----------------------------|
| Country Parks Office                                       | Dog Bins                             | Lakeside Cafe       | Kiosk                | <b>Private Hire Spaces</b> |
| Car Park and Disabled Parking                              | No Public Access                     | Picnic Area         | No Dogs              | <b>1</b> The Beech Hut     |
| Tree Top Adventure, Tree Top Junior, Segways and Bike Hire | Toilets (Accessible and Baby Change) | Black Park Boundary | Adventure Playground | <b>2</b> Lakeside Room     |
|  |                                      |                     |                      | <b>3</b> Foxley Copse      |
|  |                                      |                     |                      | <b>4</b> Black Pine's Camp |

